

GENERAL INFO GUIDE: WE18 VOLUNTEERS

This general info guide contains information that is pertinent to all volunteers. SWE recommends printing this before conference for an on-hand reference.

TO START YOUR SHIFT

- All volunteers are required to download the WE18 conference app before conference!
- Report to the volunteer room prior to your shift starting – reference your Volunteer Role Info Guide (estimate: 10-30 minutes prior to shift)
- Find the point-of-contact you report to, and take her cell phone number (refer to Org Chart on next page)

VOLUNTEER DRESS CODE

- Dress code for volunteers is business casual
- Wear your volunteer scarf while on-duty

CODE OF CONDUCT

- You may be asked to switch roles and/or fill-in where help is needed!
- Keep in mind: not everything will run perfectly when conducting a major conference, so your flexibility is important. Focus on the positive, especially the solution.
- Although rare, you may receive complaints and encounter unprofessional behavior. Please be professional and gracious. Find SWE or venue staff when something is out of your control.
- Provide superior customer service during your volunteer shift to ensure attendees, exhibitors, speakers, etc. experience a welcome conference environment

IMPORTANT LOCATIONS

- Volunteer Room: Room 201, Minneapolis Convention Center
- Invent It. Build It.: Exhibit Hall A, Lower Level
- Tours: Shuttle station located near Ballroom AB, First Level
- To view floor plans, download the app or refer to the venue website.

COMMUNICATIONS

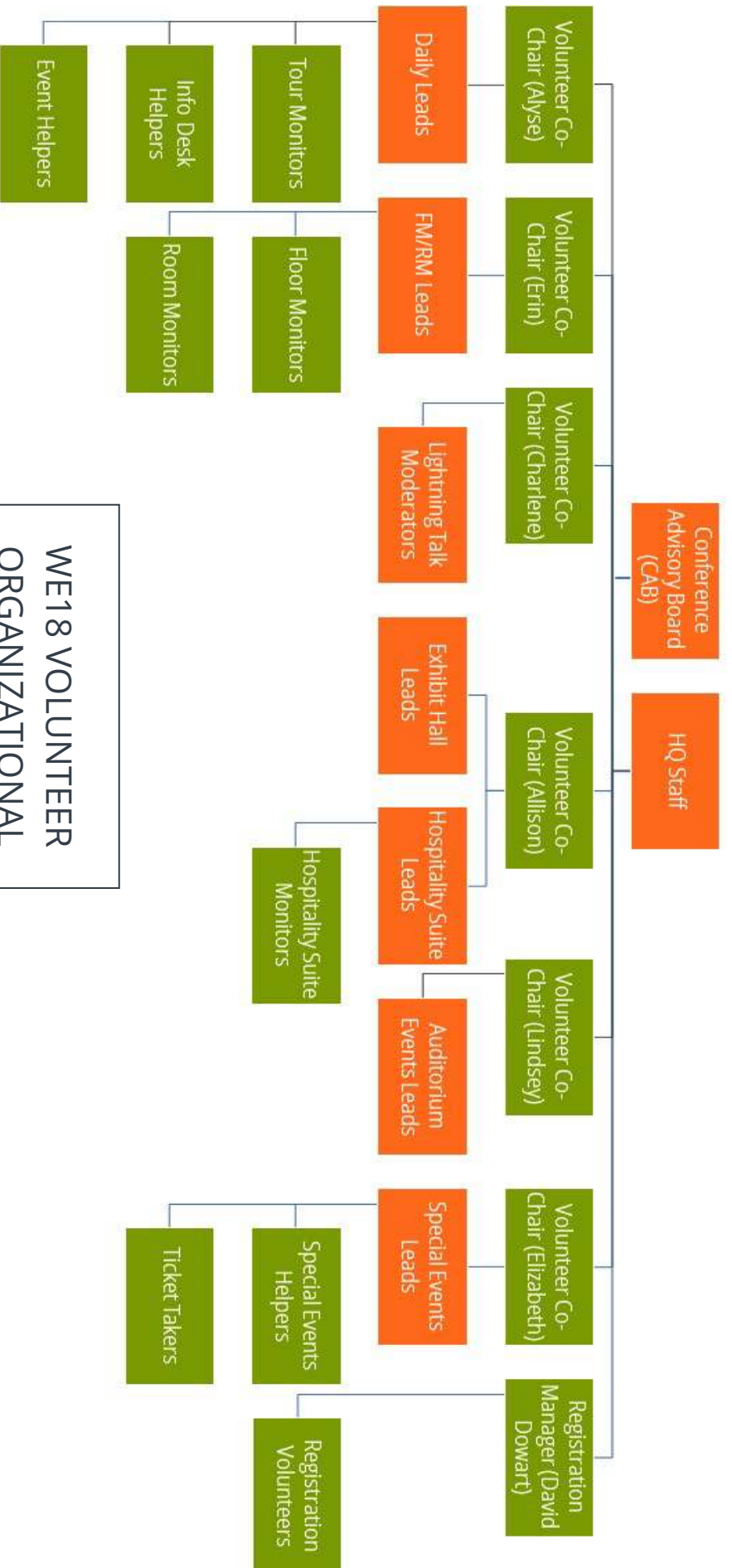
- Report to your Volunteer Co-Chair or Lead Volunteer with any issues you cannot take care of on your own
- Technical issues? Find AV staff in black shirts around the conference venue. They will be available in most hallways, wearing black shirts
- You will need your cell phone and a phone charger

SECURITY

- Fire Marshal: Provided through the Fire Prevention Bureau.
- Medical Services: First aid personnel on the floor.
- Police Officers: Provided through the Minneapolis Police Department.

We18

The World's Largest Conference
for Women Engineers



WE18 VOLUNTEER
ORGANIZATIONAL
CHART

VOLUNTEER INFO GUIDE: SPECIAL EVENT ARRANGEMENTS HELPER

This general info guide contains information that is pertinent to Special Event Arrangements Helpers. SWE recommends printing this before conference for an on-hand reference.

REPORTS TO

Special Events Lead

GENERAL DUTIES

- Assist with general event operations
- Monitor traffic control

SPECIFIC DUTIES

- Help with the many details involved with arrangements of a major event, i.e. program placement, place cards, flower arrangements, and other “special touches” to an event
- Note that these events can be located at Convention Center or Hotel properties
- This position may be assigned to the Spark Center or Social Media Lounge when needed
- Other duties as required

